

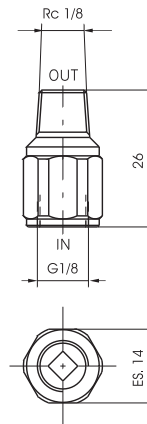
1

G 1/8" compact check valves

Ordering code

6.07.18.C

SEALS
R = NBR
VR = FPM



Weight gr. 50



Operational characteristics

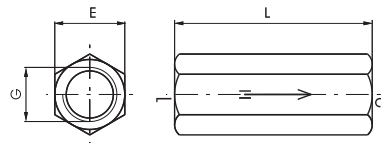
Fluid	Max working pressure (bar)	Temperature °C	Flow rate at 6 bar with Δp=1 (NI/min)
Filtered air	Min.	-5 - +70	100 NI/min

Check valves

Ordering code

6.07.T

POPPET
05 = NBR - M5
18 = NBR - G 1/8"
14 = NBR - G 1/4"
38 = NBR - G 3/8"
12 = NBR - G 1/2"
18V = FPM - G 1/8"
14V = FPM - G 1/4"
38V = FPM - G 3/8"
12V = FPM - G 1/2"



G	M5	1/8"	1/4"	3/8"	1/2"	
E	10	14	17	21	25	
L	21	37	48	50	60	
Weight gr.	14	35	60	85	136	
Flow rate at 6 bar with Δp = 1	NI/min.	160	650	1150	2600	3500

Weight "see table"



Operational characteristics

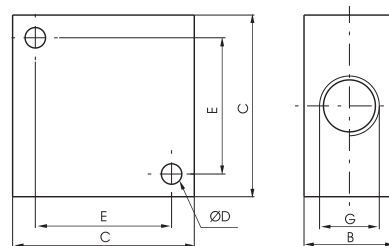
Fluid	Max working pressure (bar)	Temperature °C
Filtered and lubricated air	10 bar	-5 ÷ +70 (+150°C FPM)

Manifold 4 ports

Ordering code

6.08.C/4

CONNECTION
05 = M5
18 = G 1/8"
14 = G 1/4"
38 = G 3/8"
12 = G 1/2"



G	M5	1/8"	1/4"	3/8"	1/2"
B	10	16	20	20	30
C	20	32	40	40	50
D	3,3	4,5	4,5	5,5	6,5
E	14	22	30	30	38
Weight gr.	28	38	68	54	135

Weight "see table"

Operational characteristics

Fluid	Max working pressure (bar)	Temperature °C
Filtered air	20 bar	-5 - +70