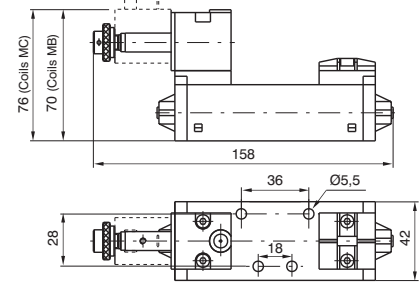
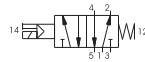




2

**Solenoid - Spring - 5/2**

Ordering code
<b>1011.52.3.9.M</b>
<b>M</b> MECHANICAL CODE See Valves Series 300 CNOMO

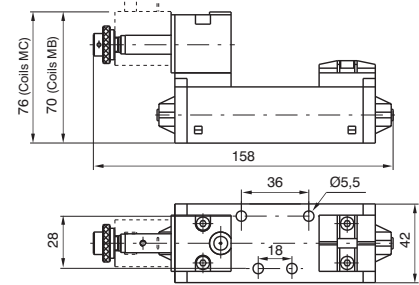
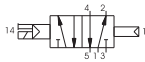


Weight gr. 290  
Minimum operating pressure 2,5 bar

Operational characteristic	Fluid	Max working pressure (bar)	Temperature °C	Flow rate at 6 bar with Δp=1 (NI/min)
	Filtered and lubricated air	10	-5 - +50	900

**Solenoid - Differential - 5/2**

Ordering code
<b>1011.52.3.6.M</b>
<b>M</b> MECHANICAL CODE See Valves Series 300 CNOMO

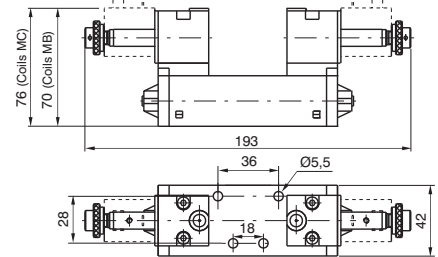
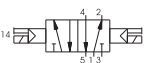


Weight gr. 290  
Minimum operating pressure 2 bar

Operational characteristic	Fluid	Max working pressure (bar)	Temperature °C	Flow rate at 6 bar with Δp=1 (NI/min)
	Filtered and lubricated air	10	-5 - +50	900

**Solenoid - Solenoid - 5/2**

Ordering code
<b>1011.52.3.5.M</b>
<b>M</b> MECHANICAL CODE See Valves Series 300 CNOMO

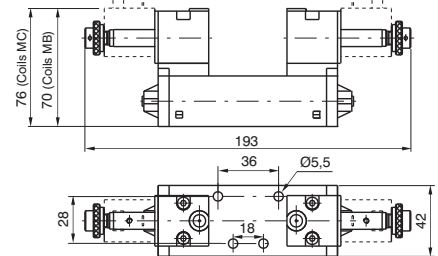


Weight gr. 350  
Minimum operating pressure 1,5 bar

Operational characteristic	Fluid	Max working pressure (bar)	Temperature °C	Flow rate at 6 bar with Δp=1 (NI/min)
	Filtered and lubricated air	10	-5 - +50	900

**Solenoid - Solenoid - 5/3**

Ordering code
<b>1011.53.F.3.5.M</b>
FUNCTION
<b>F</b> 31=Closed centres
32=Open centres
33=Pressured centres
<b>M</b> MECHANICAL CODE See Valves Series 300 CNOMO



Weight gr. 350  
Minimum operating pressure 3 bar

Operational characteristic	Fluid	Max working pressure (bar)	Temperature °C	Flow rate at 6 bar with Δp=1 (NI/min)
	Filtered and lubricated air	10	-5 - +50	900